

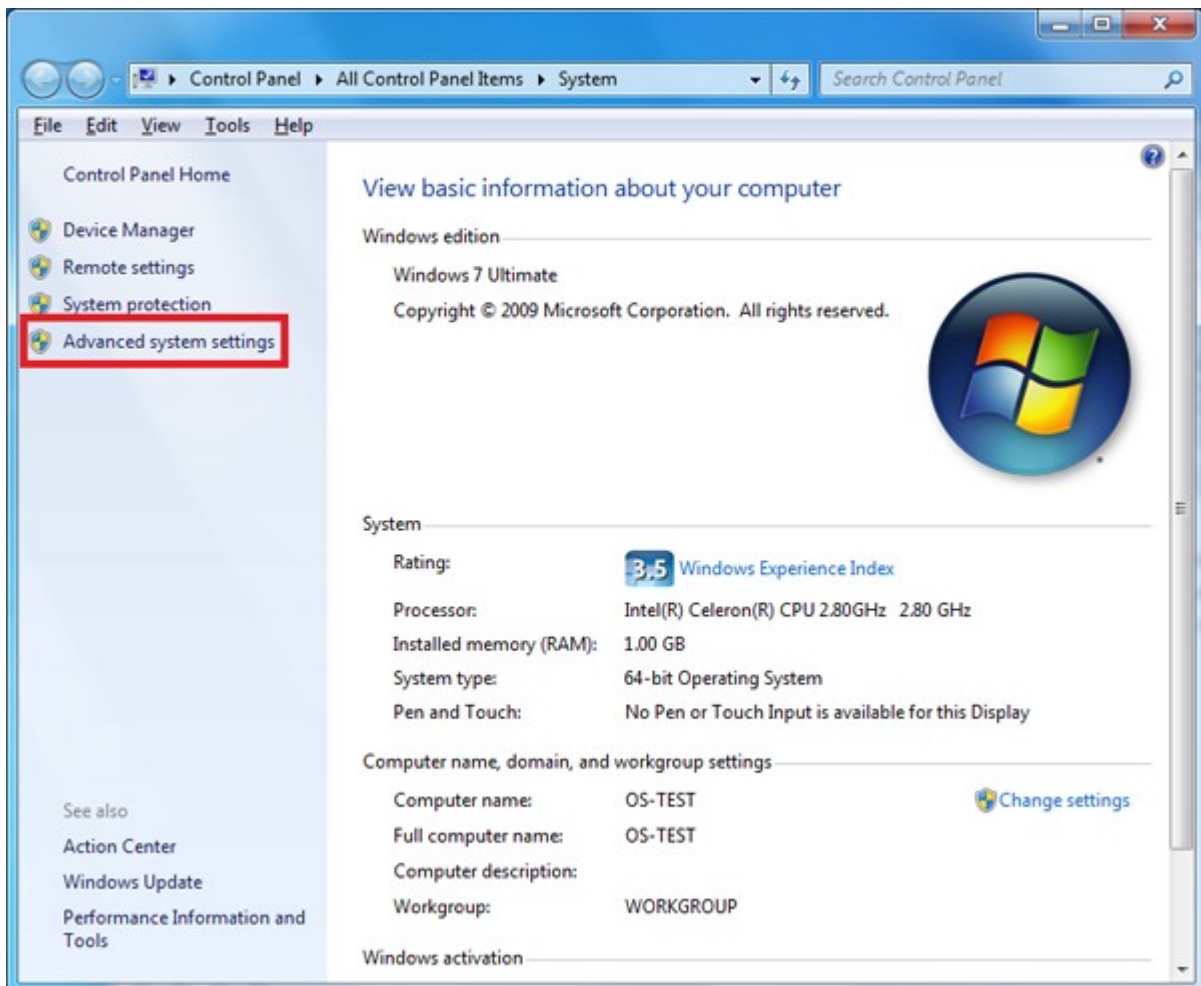
Windows DEP (Data Execution Prevention)

Data Execution Prevention (DEP) is a set of hardware and software-enforced technologies implemented (with support from Intel/AMD) in Microsoft Windows XP Service Pack 2 (SP2) and Windows Vista. It helps protect your computer against the insertion of malicious code into areas of computer memory reserved for non-executable code. Hardware-enforced DEP is a feature of certain processors (i.e. 'XD' on Intel and 'NX' on AMD CPU's) that prevents the execution of code in memory regions that are marked as data storage. Windows XP SP2 also includes software-enforced DEP that is designed to reduce exploits of exception handling mechanisms in Windows. DEP may cause Data Project software to behave unexpectedly including program crashes.

Data Project recommends you to use the system default DEP settings which are turned on only for essential Windows programs and services.

Checking your DEP settings for Windows Vista

1. From Windows, click on **Start** -> Right click **Computer**, select **Advanced system settings**



2. From **System Properties**, select **Advanced** tab
3. Under **Performance**, click **Settings**



4. From **Performance Options** window, select **Data Execution Prevention** tab
5. Select **Turn on DEP for essential Windows programs and services only**. Click on Apply, then reboot your PC.